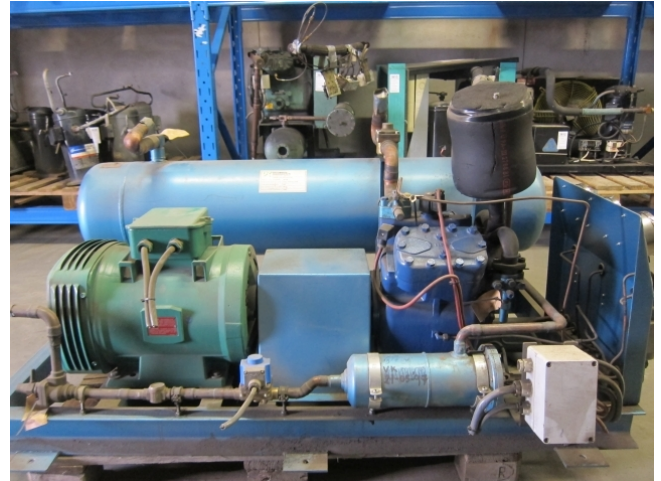


Bock F5

Specifications

Marque	Bock
Le type	F5
Réfrigérant	Freon
kW at +10°C/+40°C	83.33
kW at 0°C/+40°C	59.40
kW at -5°C/+40°C	49.15
kW at -10°C/+40°C	40.01
kW at -20°C/+40°C	24.94
kW at -30°C/+40°C	13.98
kW at -40°C/+40°C	6.89
kW at -45°C/+40°C	4.72
Sur le châssis en acier	✓
Interrupteurs de sécurité de pression	✓
Manomètres	✓
Réservoir de liquide	✓
Réservoir de liquide ltr.	115
Liquid déshydrateur	✓
ligné	
Voyant	✓
Electrovanne	✓
Remarques	R404a - R22 or other freon types
Tailles	1510x1160x840 mm (LxWxH)
Stock	1

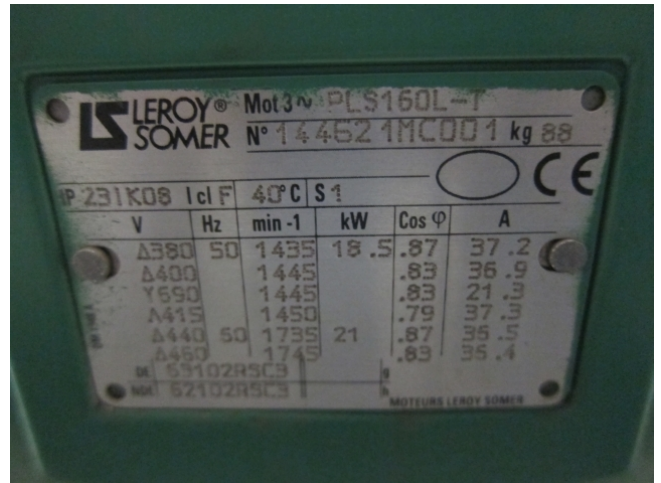
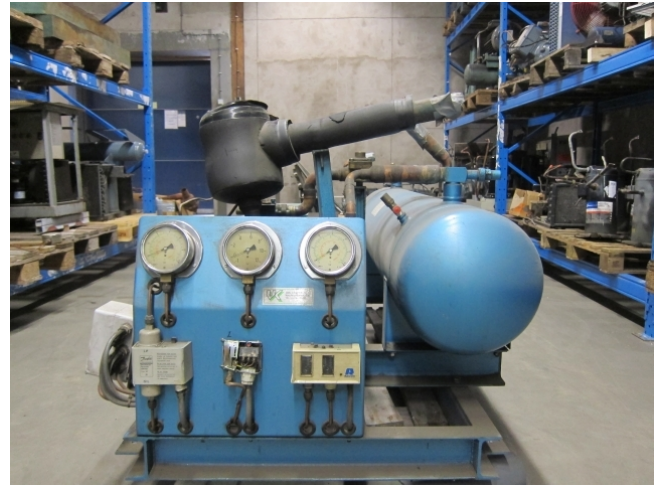
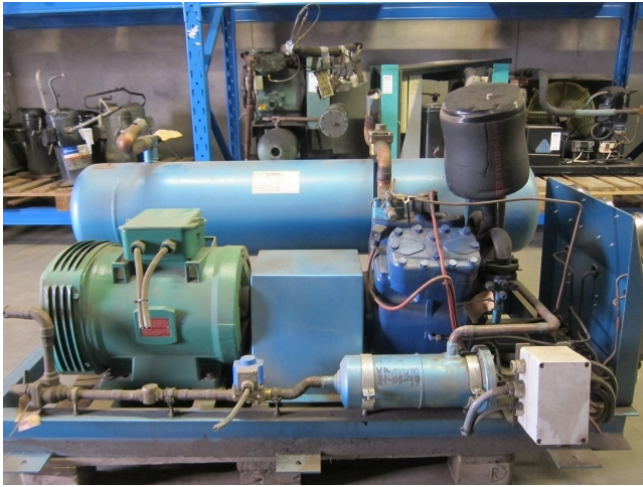


Description

Used Bock F5

Used Bock F5 freon compressor, complete with pressure safety switches, pressure gauges, liquid line filter drier, sight glass, solenoid valve and liquid receiver of 115 liters. This unit has a cooling capacity of 83,33 kW at +10°C/+40°C.

Why choose for HOSBV? We're not only the largest used refrigeration specialist in Europe, but also, we deliver all equipment including an extensive test, warranty and industrial cleaning. *Optional we can also perform a new paint job and arrange the logistics.



R404A/R507		Performance data										1.450 rpm	
Type	Cond. temp. °C	Cooling capacity \dot{Q}_0 [kW]										Power P [kW]	
		Evaporating temperature °C											
		10	5	0	-5	-10	-15	-20	-25	-30	-35		-40
FX2	30 Q	13423	11418	9621	8020	6606	5366	4290	3366	2584	1933	1402	979
	P	2.21	2.19	2.13	2.05	1.94	1.80	1.65	1.48	1.31	1.12	0.94	0.75
	Q	11561	9785	8201	6797	5562	4485	3555	2761	2092	1537	1085	724
FX3	30 Q	28402	24165	20377	17011	14041	11442	9187	7251	5698	4231	3096	2175
	P	3.92	3.97	3.94	3.83	3.66	3.44	3.17	2.88	2.56	2.23	1.90	1.57
	Q	24498	20763	17437	14485	11911	9657	7710	6042	4628	3442	2458	1650
FX4	30 Q	20984	17356	14498	11985	9791	7889	6254	4860	3680	2690	1862	1246
	P	5.90	5.62	5.28	4.89	4.47	4.02	3.56	3.08	2.61	2.15	1.72	1.31
	Q	53909	45836	38585	32117	26393	21373	17019	13292	10151	7559	5476	3862
FX5	30 Q	834	830	809	773	725	668	604	536	466	396	329	269
	P	46772	39538	33069	27326	22270	17862	14063	10834	8135	5928	4173	2832
	Q	10.09	9.75	9.27	8.67	7.98	7.21	6.41	5.59	4.78	4.00	3.27	2.63
FX14/1166	30 Q	39157	33814	27179	22214	17880	14137	10946	8268	6064	4295	2922	1957
	P	11.44	10.83	10.10	9.28	8.40	7.47	6.53	5.59	4.69	3.85	3.09	2.42
	Q	95654	81844	69253	57854	47620	38522	30533	23624	17768	12938	9105	6242
FX14/366	30 Q	12.98	12.49	13.55	13.24	12.62	11.75	10.69	9.69	8.22	6.84	5.70	4.57
	P	83330	70784	59801	49154	40014	31955	24949	18967	13981	9905	6890	4728
	Q	16.87	16.64	16.05	15.16	14.03	12.72	11.28	9.79	8.29	6.85	5.59	4.39
FX14/1366	30 Q	70427	59251	49183	40194	32258	25245	19428	14480	10472	7377	5168	3587
	P	20.21	19.31	18.12	16.70	15.11	13.41	11.67	9.93	8.26	6.73	5.38	4.21
	Q	131669	112604	95281	79998	65118	53000	42008	32503	24447	17801	12527	8587
FX14/1366	30 Q	17.86	18.55	18.64	18.22	17.37	16.17	14.71	13.06	11.32	9.55	7.85	6.29
	P	114650	97388	81727	67628	55954	43966	34326	26096	19237	13711	9480	6506
	Q	23.21	22.89	22.08	20.86	19.30	17.49	15.32	13.47	11.61	9.63	7.81	6.04
FX14/1366	30 Q	96896	81521	67668	55301	44382	34871	26730	19922	14408	10150	7110	5000
	P	27.80	26.56	24.82	22.97	20.79	18.45	16.05	13.66	11.37	9.25	7.40	5.70
	Q	154448	132149	111819	92414	76889	62199	49229	38144	28690	20990	14701	10078
FX14/1366	30 Q	20.96	21.77	21.87	21.38	20.38	18.98	17.26	15.33	13.28	11.21	9.21	7.38
	P	124550	114291	95912	79266	64609	51597	40284	30623	22575	16091	11125	7625
	Q	27.77	26.87	25.63	23.88	21.88	19.63	17.26	14.88	12.56	10.22	8.00	6.20